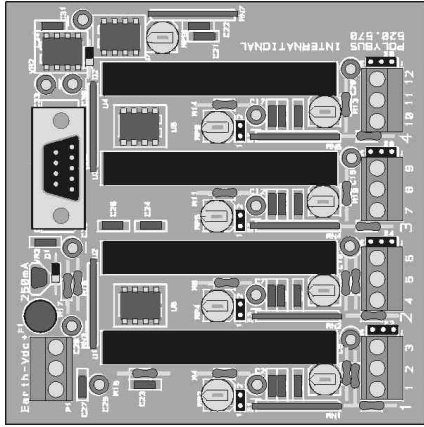


GTB205i

2/4 Channel isolated high level analog input block.



Features

- Two or four isolated high level analog input channels.
- Interfaces to various economical analog input modules.
- Input to output and channel to channel isolation.
- Channel Gain/Offset adjustment.
- Intermediate terminal block replacement.
- Selectable voltage or current input

The GTB205i General Termination Block offers a modular solution to the integration of non-isolated analog input modules. Each GTB provides 2 or 4 channels of transformer isolated high level AIN interface to analog input modules with process current and voltage signals. Channels are isolated from each other and share a common power source. Power is fused protected. Transient protection is provided to all I/O channels. Potentiometers for gain and offset adjustment are provided per channel. Two jumpers are provided per channel, one to select fixed gains of one or one hundred, and two to select a current to voltage resistor.

Specifications	
Compatibility:	Unisolated analog input modules.
Number of Inputs:	2 or 4
Input Range:	0 to 5 Vdc, ± 5 Vdc. 0 to 20mA, ± 20 mA.
Isolation Voltage:	ac: ± 750 Vrms, dc: ± 1060 Vdc input to output and channel to channel.
Resolution:	12 bit
Noise Rejection Ratio:	ac: 115dB at 60Hz. dc: 160dB.
Input Impedance:	250 Ω , $\pm 0.1\%$, 1/2W current input
Adjustments:	Gain and offset per channel.
Output Range:	± 10 Vdc, ± 5 Vdc
External Power:	24 Vdc
External Terminations:	Screw-clamp terminal blocks, 12 AWG.
Interface:	9 pin D-sub, male.
Dimensions:	100 x 100 x 60mm

Ordering Information

- GTB205i-2 2 Channel isolated high level analog input, 14AWG fixed TB1, 100 x 100mm.
- GTB205i-4 4 Channel isolated high level analog input, 14AWG fixed TB1, 100 x 100mm.

Assembly Options

- TB 12 AWG fixed TB1.
- PTB 12 AWG pull-apart TB1.