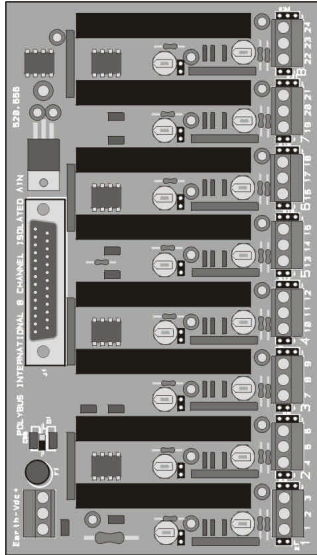


GTB245i

8 Channel isolated high level analog input block.



Features

- Eight isolated high level analog input channels.
- Interfaces to various economical analog input modules.
- Input to output and channel to channel isolation.
- Channel Gain/Offset adjustment.
- Intermediate terminal block replacement.
- Selectable voltage or current input

The GTB245i General Termination Block offers a modular solution to the integration of non-isolated analog input modules. Each GTB provides 8 channels of transformer isolated high level AIN interface to analog input modules with process current and voltage signals. Channels are isolated from each other and share a common power source. Power is fused protected. Transient protection is provided to all I/O channels. Potentiometers for gain

and offset adjustment are provided per channel. Two jumpers are provided per channel, one to select fixed gains of one or one hundred, and two to select a current to voltage resistor.

<i>Specifications</i>	
Compatibility:	Unisolated analog input modules.
Number of Inputs:	8
Input Range:	0 to 5 Vdc, ± 5 Vdc. 0 to 20mA, ± 20 mA.
Isolation Voltage:	ac: ± 750 Vrms, dc: ± 1060 Vdc input to output and channel to channel.
Resolution:	12 bit
Noise Rejection Ratio:	ac: 115dB at 60Hz. dc: 160dB.
Input Impedance:	250 Ω , $\pm 0.1\%$, 1/2W current input
Adjustments:	Gain and offset per channel.
Output Range:	± 10 Vdc, ± 5 Vdc
External Power:	24 Vdc
External Terminations:	Screw-clamp terminal blocks, 12 AWG.
Interface:	25 pin D-sub, male.
Dimensions:	175 x 100 x 60mm

Ordering Information

GTB245i 8 Channel isolated high level
analog input, 14AWG fixed TB1,
175 x 100mm.

Assembly Options

-TB 12 AWG fixed TB1.
-PTB 12 AWG pull-apart TB1.