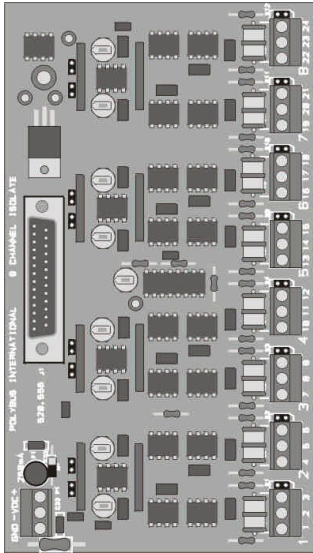


**GTB255f**

8 Channel solid state flying cap analog input block.



**Features**

- Eight channels of transformer isolated high level Analog input.
- Interfaces to various economical analog input modules.
- Channel gain adjustment.
- Selectable fixed gains per channel.
- Input to output and channel to channel isolation.

The GTB255f offers a modular solution to the field integration of non-isolated analog input modules. Each GTB provides 8 channels of transformer isolated high level AIN, which interface to process current and voltage signals. Channel inputs are isolated to 350 V with a common clock synchronization power source. Rejection of 60 Hz is inherent to the switched capacitor sampling circuit. Power is fused protected. Transient protection is provided to all I/O channels. Potentiometers for gain adjustment are provided per channel. A jumper is provided per channel to select fixed gains of one or

two. Each channel has a jumper to select a current to voltage resistor. Screw cage-clamp terminal blocks are provided for I/O.

<i>Specifications</i>	
Compatibility:	Unisolated analog input modules.
Number of Inputs:	8
Input Range:	0 to 5 Vdc, $\pm 5$ Vdc. 0 to 20mA, $\pm 20$ mA.
Isolation Voltage:	ac: $\pm 220$ Vrms, dc: $\pm 350$ Vdc input to output and channel to channel.
Resolution:	12 bit
Noise Rejection Ratio:	ac: 55dB at 60Hz. dc: 60dB.
Input Impedance:	250 $\Omega$ , $\pm 0.1\%$ , 1/2W current input
Adjustments:	Gain per channel.
Output Range:	$\pm 10$ Vdc, $\pm 5$ Vdc
External Power:	24 Vdc
External Terminations:	Screw-clamp terminal blocks, 12 AWG.
Interface:	25 pin D-sub, male.
Dimensions:	175 x 100 x 60mm

**Ordering Information**

GTB255f      8 Channel solid state flying cap  
isolation analog input, 14 AWG  
fixed TB1, 175 x 100mm.

*Assembly Options*

- G              350V Gas tubes.
- TB             12 AWG fixed terminal block.
- PTB           12 AWG pull-apart terminal  
block.