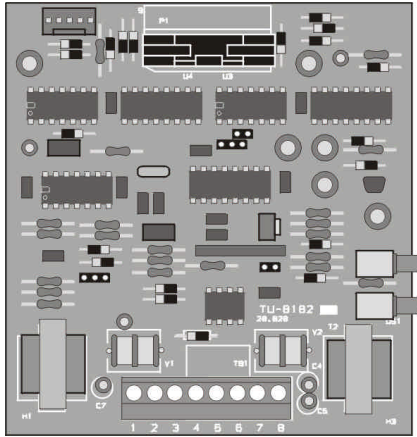


RTU8182

Analog Modem



Features

- Bell202 1200 baud full duplex operation or CCITT v.23.
- Adjustable RTS-CTS transmit handshaking.
- "Push-to-Talk" and "Anti-jabber".
- LED indicators for RTS and RxD.
- Line powered through IDC header.

The RTU-8182 Analog Modem includes the same classic modem features with anti-jabber circuitry and second generation IC technology. Switched capacitor circuitry within the board contains a group delay equalizer, automatic gain control, carrier detect level adjustment and bias distortion adjustment. Potentiometer adjustments are used for RTS/CTS time delay, transmitter gain and receiver bias distortion. The 8182 mates directly to the communication port of the Siemens RTU-8635 and RTU-8450 SBX module.

Specifications

Line power: Acquired from TxD, RTS.
 External power: +12Vdc-10mA,
 -12Vdc-5mA.
 RS232 Interface:
 Input: TxD - Transmit Data.
 RTS - Request to Send.
 Full RS232D Electrical.
 Output: RxD - Receive Data.
 CTS - Clear to Send.

CD - Carrier Detect.
 Ext. powered - $\pm 8V$.
 0 - 70 C.

Temperature:
Transmitter
 Anti-jabber: 150mS min. key-up, key-down. 10S max.
 RTS Delay: 25mS min. key-up, key-down adjustable to 30S
 Key Generation: Optocoupler open collector TTL.
 Constant carrier: Cont. carrier in 4 wire.
 Modulator: Phase coherent FSK.
 Frequencies: Bell202 1200 CCITT 600
 Mark 1200 1300
 Space 2200 1700
 Output Level: Adjust from 0 to -40db.
 Filter: Low pass $F_c=3300Hz$.
 Impedance: 600 Ohms.
 Operation modes: 2 wire or 4 wire.
 Transformer: Audio BW=.3-3.0kHz 600Ohms.
 Secondary: Capacitor coupled / gas tubes.
Receiver
 Impedance: 600 Ohms.
 Input Buffer: Diode limited, capacitor coupled.
 Secondary: Capacitor coupled / gas tubes.
 Sensitivity: -40dB @ 600 Ohms min.
 Demodulator: Automatic Gain Control.
 Low Pass Filter.
 Group delay equalization.
 Carrier Detection: On/Off/On delay 25mS
 max 2.5dB Hysteresis,
 CD signal.
 Bias Adjustment: Continuously adjustable
 for optimal symmetry.
 RxD Active: DS1 Red LED.
 RTS Active: DS2 Red LED.
 Dimensions: L4.10" x W3.80" x H1.20".
 Connectors:
 J1: 10 pin IDC.
 TB1: 8 pos. Fixed terminal block.

Ordering Information

RTU-8182 8182 analog modem, 12 AWG fixed TB1 (base model).

Options:

-RJ RJ45 Modular Phone Jack.
 -T 12AWG pull-apart rt angle TB1
 -TB 12AWG pull-apart straight TB1.